

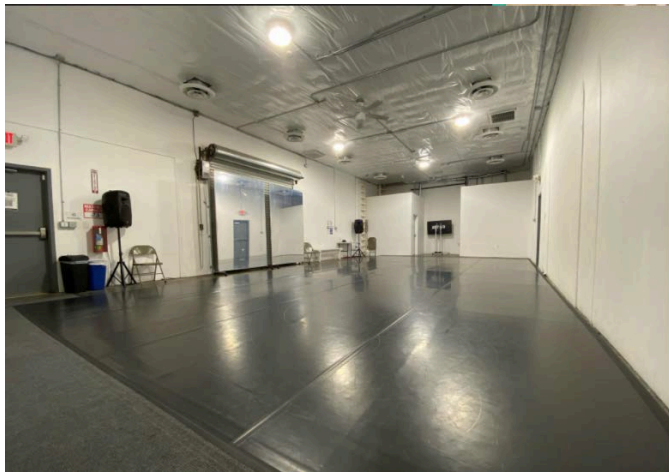


# Stomping Ground L.A.

## Space and Technical Specifications

### **WAREHOUSE**

Sprung floor with black Marley  
Tech: Truss and Batons; Black Curtain  
Theatrical Lighting and Sound.  
*\*Lighting Inventory on Pg 2.*  
Widescreen T.V. equipped with HDMI cord  
Floor Dimensions: 40' x 48'  
4 Bathrooms  
HVAC

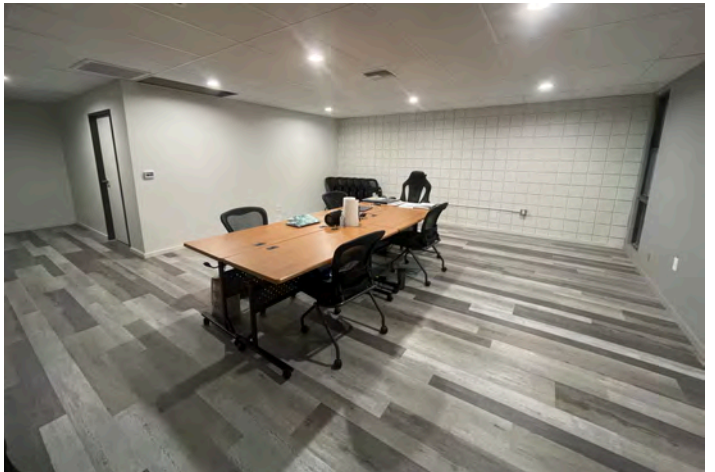


### **GARAGE**

Sprung floor with black Marley  
Tech: Sound System  
Floor Dimensions: 20' x 40'  
Widescreen T.V. equipped with HDMI cord  
2 Bathrooms  
A/C

### **PROPERTY EXTRAS**

Onsite gated parking  
Wifi  
Dressing room with shower  
Co-working / Meeting space  
Water bottle fillers  
ADA accessible  
Kitchenette with fridge, dishwasher,  
microwave, and freezer  
Movable mirrors and ballet bars  
Security system



## WAREHOUSE RATES

NON-PROFIT / INDEPENDENT			
RENTAL TYPE	DESCRIPTION	RATE	ADDITIONAL INFO
Rehearsal	Hourly	\$ 40.00	
Residency Rehearsal	10+ hours booked in advance	\$ 30.00	
Film/Photo/Tech Rehearsal	Hourly	\$ 50.00	incl. theatrical lights
Film/Photo	Day rate (12 hrs same day)	\$ 500.00	incl. theatrical lights
Live Performance Package	4hrs (setup, show time, close)	\$ 300.00	incl. theatrical lights + seating + 2 support staff + VAX check
CLASS			
RENTAL TYPE	DESCRIPTION	RATE	ADDITIONAL INFO
Class	Hourly	\$ 50.00	
Residency Class (non-profit / Ind only)	10+ hours booked in advance	\$ 40.00	
FOR-PROFIT / COMMERCIAL			
RENTAL TYPE	DESCRIPTION	RATE	ADDITIONAL INFO
Rehearsal	Hourly	\$ 75.00	
Film/Photo	Hourly	\$ 100.00	includes theatrical lights
Film/Photo	Day rate (12 hrs same day)	\$ 1,000.00	includes theatrical lights
SERVICES			
RENTAL TYPE	DESCRIPTION	RATE	ADDITIONAL INFO
Lighting Tech (Fim / Photo / Class setup)	Hourly or Single look setup	\$ 25.00	SGLA Staff Technician to set theatrical lighting look

## GARAGE RATES

NON-PROFIT / INDEPENDENT			
RENTAL TYPE	DESCRIPTION	RATE	ADDITIONAL INFO
Rehearsal	Hourly	\$ 25.00	
Residency Rehearsal	10+ hours booked in advance	\$ 15.00	
Film/Photo/Reception	Hourly	\$ 35.00	
CLASS			
RENTAL TYPE	DESCRIPTION	RATE	ADDITIONAL INFO
Class	Hourly	\$ 35.00	
Residency Class (non-profit / Ind only)	10+ hours booked in advance	\$ 25.00	
FOR-PROFIT / COMMERCIAL			
RENTAL TYPE	DESCRIPTION	RATE	ADDITIONAL INFO
Rehearsal	Hourly	\$ 40.00	
Film/Photo	Hourly	\$ 50.00	



## Nearby Stores

### Coffee Shops

- Starbucks
- Holy Grounds Coffee and Tea
- Jamba Juice
- 85 Degree
- 7 Leaves

### Restaurants & Fast Food

- Cheo's Tacos (Wed - Sun after 6:30pm)
- Subway
- Chipotle
- Panera
- Wendys
- McDonalds
- Jack in The Box
- The Village Mart and Deli

### Stores

- Costco
- Home Depot
- Target
- Kohls



litegeist, llc  
 1607 N El Centro Ave #6  
 Los Angeles, CA 90028  
 310.896.5013

## STOMPING GROUND LA LIGHTING INVENTORY

### CONTROL

QTY	<i>ITEM</i>	<i>SPARE</i>
1	Ion XE Console w/ 24" Touchscreen	0
2	ETC Response 2-port nodes (located DSL & DSR)	0
1	Elation 8-port Opto splitter	0

### FIXTURES

QTY	<i>ITEM</i>	<i>SPARE</i>
28	Elation Fuze Wash 120Z Moving Head	0
13	ETC ColorSource Spot 36-degree	3

### CABLE

QTY	<i>ITEM</i>	<i>SPARE</i>
16	10' 5-pin DMX	11
12	15' 5-pin DMX	14
29	25' 5-pin DMX	4
8	50' 5-pin DMX	4
4	100' 5-pin DMX	0
12	10' PowerCon	12
15	15' PowerCon	0
18	25' PowerCon	14
8	10' Edison PBG	2
8	25' Edison PBG	1
8	50' Edison PBG	6

10/23/2020

All drawings, designs, specifications, and copies hereby furnished by litegeist, llc are sole and exclusive property of litegeist, llc and are to be used in regard to this project only. They shall not be reproduced or disclosed without written consent from litegeist, llc. litegeist, llc is only responsible for visual aspects of this project, and it is understood that all specifications relate solely to the appearance of the design and not to matters of safety.

**FOR DESIGN INTENT ONLY**

**NOT FOR CONSTRUCTION**

All drawings must be reviewed by a licensed electrical engineer. All equipment must be installed by a licensed electrician in accordance with all applicable local codes and the National Electric Code.

@2020 litegeist, llc

**Revisions**

Rev #	Date	Notes
A	3/10/20	Respaced wings

CLIENT: Stomping Ground LA

PROJECT:

**STOMPING  
GROUND  
LA**

DRAWING TITLE:

**LIGHT PLOT  
(As Built)**

LOCATION:  
5453 ALHAMBRA AV  
LOS ANGELES, CA 90032

DESIGNER: RZ

SCALE: 3/16"=1'-0"

JOB NUMBER: LG 2031

DRAWN BY: RZ

DATE: 9/28/20

REVISED: RZ

CHECKED BY: RZ

FILENAME: LG 2031 - Stomping Ground LA Lighting Plot - As Built.rvt

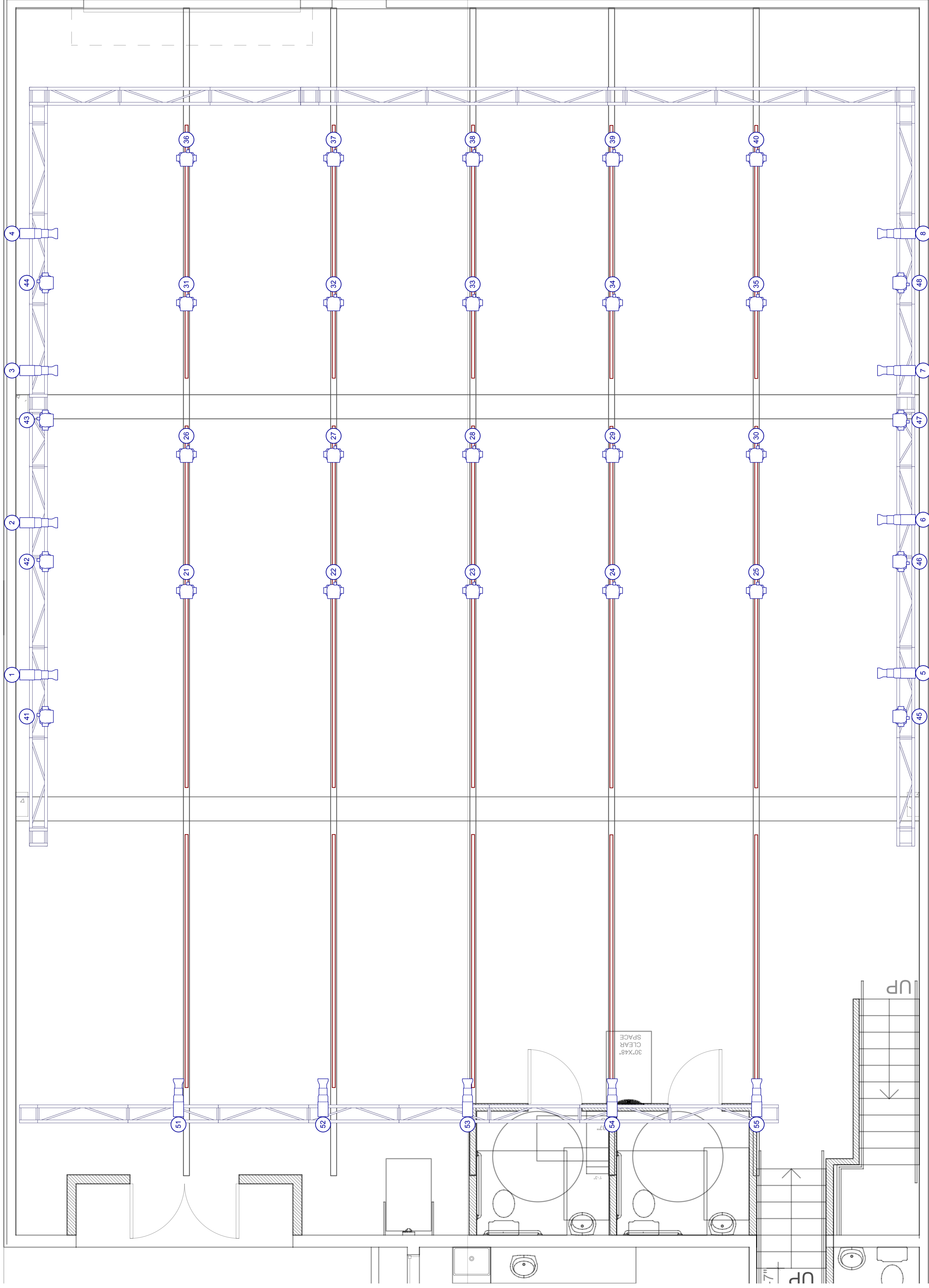
PLATE NUMBER:

**5**

of 5

**KEY**

- ETC ColorSource Spot 13
- 36deg @ 160w
- Elation Fuze Wash Z120 28
- @ 157 w



3

2

1

A

B

3

2

1