

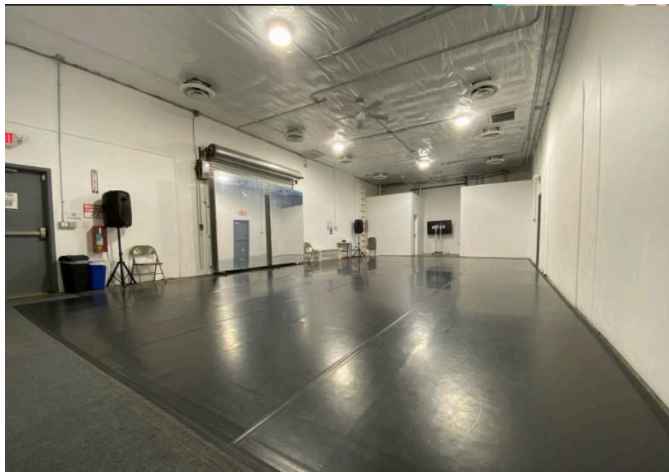
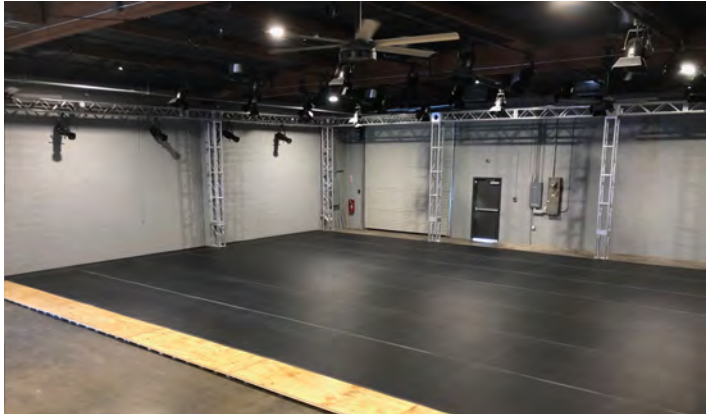


Stomping Ground L.A.

Space and Technical Specifications

WAREHOUSE

Sprung floor with black Marley
Tech: Truss and Batons; Black Curtain
Theatrical Lighting and Sound.
**Lighting Inventory on Pg 2.*
Widescreen T.V. equipped with HDMI cord
Floor Dimensions: 40' x 48'
4 Bathrooms
HVAC

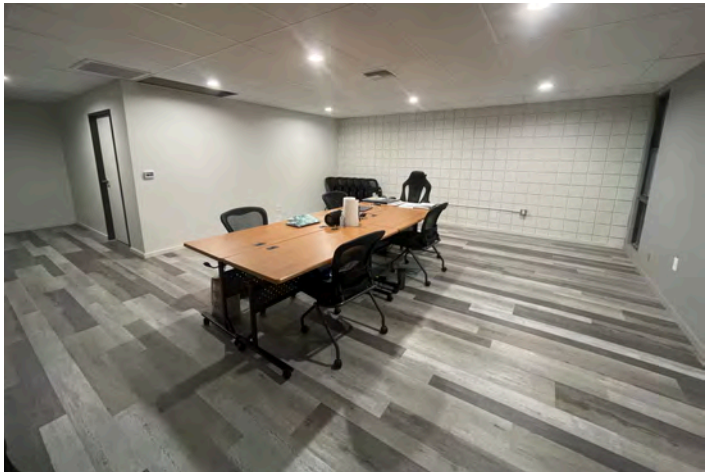


GARAGE

Sprung floor with black Marley
Tech: Sound System
Floor Dimensions: 20' x 40'
Widescreen T.V. equipped with HDMI cord
2 Bathrooms
A/C

PROPERTY EXTRAS

Onsite gated parking
Wifi
Dressing room with shower
Co-working / Meeting space
Water bottle fillers
ADA accessible
Kitchenette with fridge, dishwasher,
microwave, and freezer
Movable mirrors and ballet bars
Security system





STOMPING GROUND LA LIGHTING INVENTORY

CONTROL

QTY	<i>ITEM</i>	<i>SPARE</i>
1	Ion XE Console w/ 24" Touchscreen	0
2	ETC Response 2-port nodes (located DSL & DSR)	0
1	Elation 8-port Opto splitter	0

FIXTURES

QTY	<i>ITEM</i>	<i>SPARE</i>
28	Elation Fuze Wash 120Z Moving Head	0
13	ETC ColorSource Spot 36-degree	3

CABLE

QTY	<i>ITEM</i>	<i>SPARE</i>
16	10' 5-pin DMX	11
12	15' 5-pin DMX	14
29	25' 5-pin DMX	4
8	50' 5-pin DMX	4
4	100' 5-pin DMX	0
12	10' PowerCon	12
15	15' PowerCon	0
18	25' PowerCon	14
8	10' Edison PBG	2
8	25' Edison PBG	1
8	50' Edison PBG	6

All drawings, designs, specifications, and copies hereby furnished by litegeist, llc are sole and exclusive property of litegeist, llc and are to be used in regard to this project only. They shall not be reproduced or disclosed without written consent from litegeist, llc. litegeist, llc is only responsible for visual aspects of this project, and it is understood that all specifications relate solely to the appearance of the design and not to matters of safety.

FOR DESIGN INTENT ONLY

NOT FOR CONSTRUCTION

All drawings must be reviewed by a licensed electrical engineer. All equipment must be installed by a licensed electrician in accordance with all applicable local codes and the National Electric Code.

@2020 litegeist, llc

Revisions

Rev #	Date	Notes
A	3/10/20	Respaced wings

CLIENT: Stomping Ground LA

PROJECT:

**STOMPING
GROUND
LA**

DRAWING TITLE:

**LIGHT PLOT
(As Built)**

LOCATION:
5453 ALHAMBRA AV
LOS ANGELES, CA 90032

DESIGNER: RZ

SCALE: 3/16"=1'-0"

JOB NUMBER: LG 2031

DRAWN BY: RZ

DATE: 9/28/20

REVISED: RZ

CHECKED BY: RZ

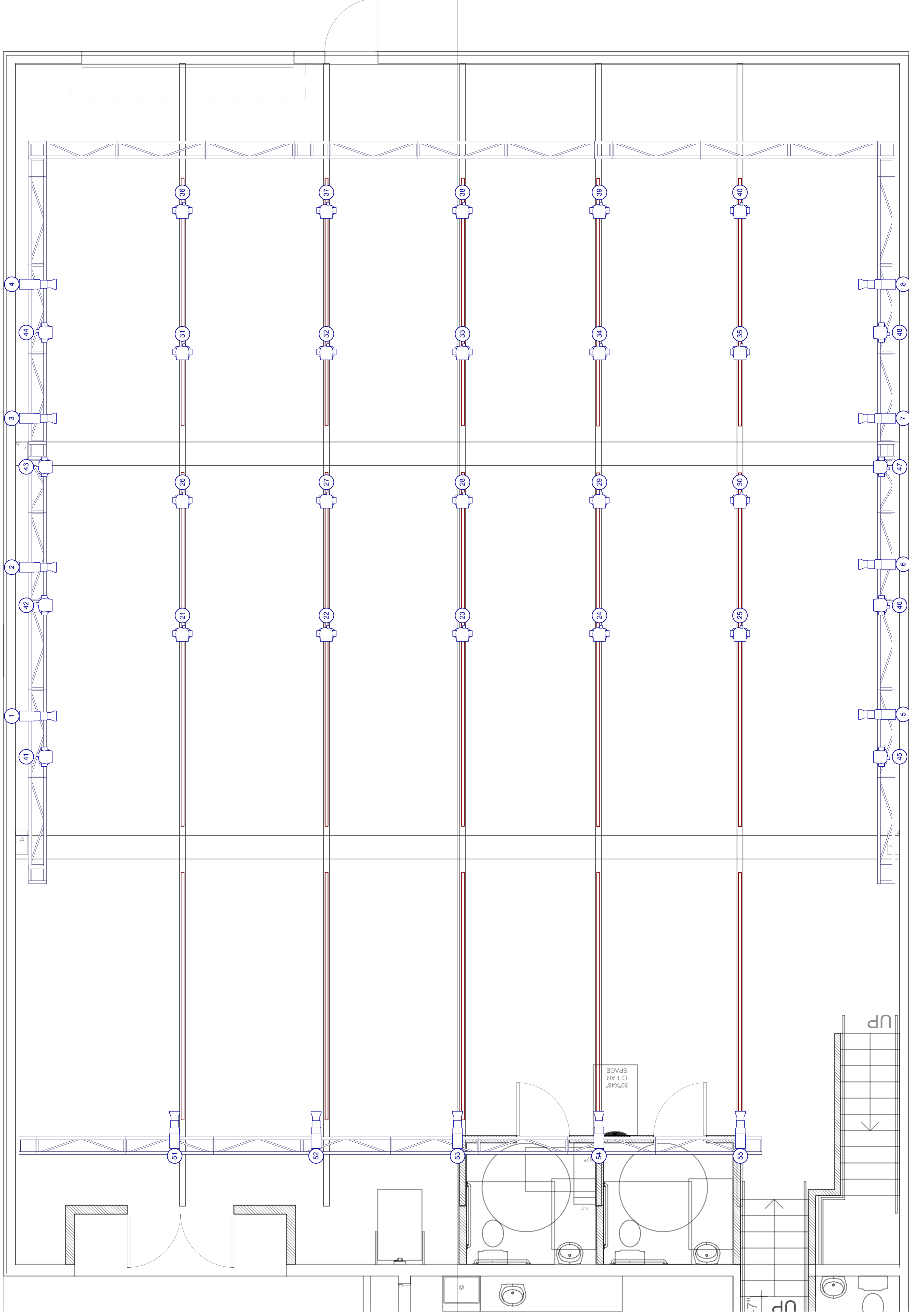
FILENAME: LG 2031 - Stomping Ground LA Lighting Plot - As Built.rvt

PLATE NUMBER:

5

KEY

- ETC ColorSource Spot 13
- 36deg @ 160w
- Elation Fuze Wash Z120 28
- @ 157 w



3

2

1

A

B

3

2

1



Nearby Stores

Coffee Shops

- Starbucks
- Holy Grounds Coffee and Tea
- Jamba Juice
- 85 Degree
- 7 Leaves

Restaurants & Fast Food

- Cheo's Tacos (Wed - Sun after 6:30pm)
- Subway
- Chipotle
- Panera
- Wendys
- McDonalds
- Jack in The Box
- The Village Mart and Deli

Stores

- Costco
- Home Depot
- Target
- Kohls