

## STOMPING GROUND L.A. – SPEC SHEET

### WAREHOUSE SPACE

- Sprung floor with black Marley
- Truss surrounding floor and batons overhead
- Theatrical lighting with [IonXE console](#) (see plot and inventory attached)
- Sound mixer – [QU-16](#)
- 4 QSC Surround Speakers w/ Sub
- Two wireless Shure mics
- Black curtain
- [Projector – Optoma DLP](#)
- Projection screen (12 ½' tall x 16' wide)
- Floor Dimensions: 40' x 48'; Ceiling height: 16'
- Widescreen T.V. equipped with HDMI cord
- 4 restrooms
- A/C + Wifi
- ADA Accessible



### GARAGE SPACE

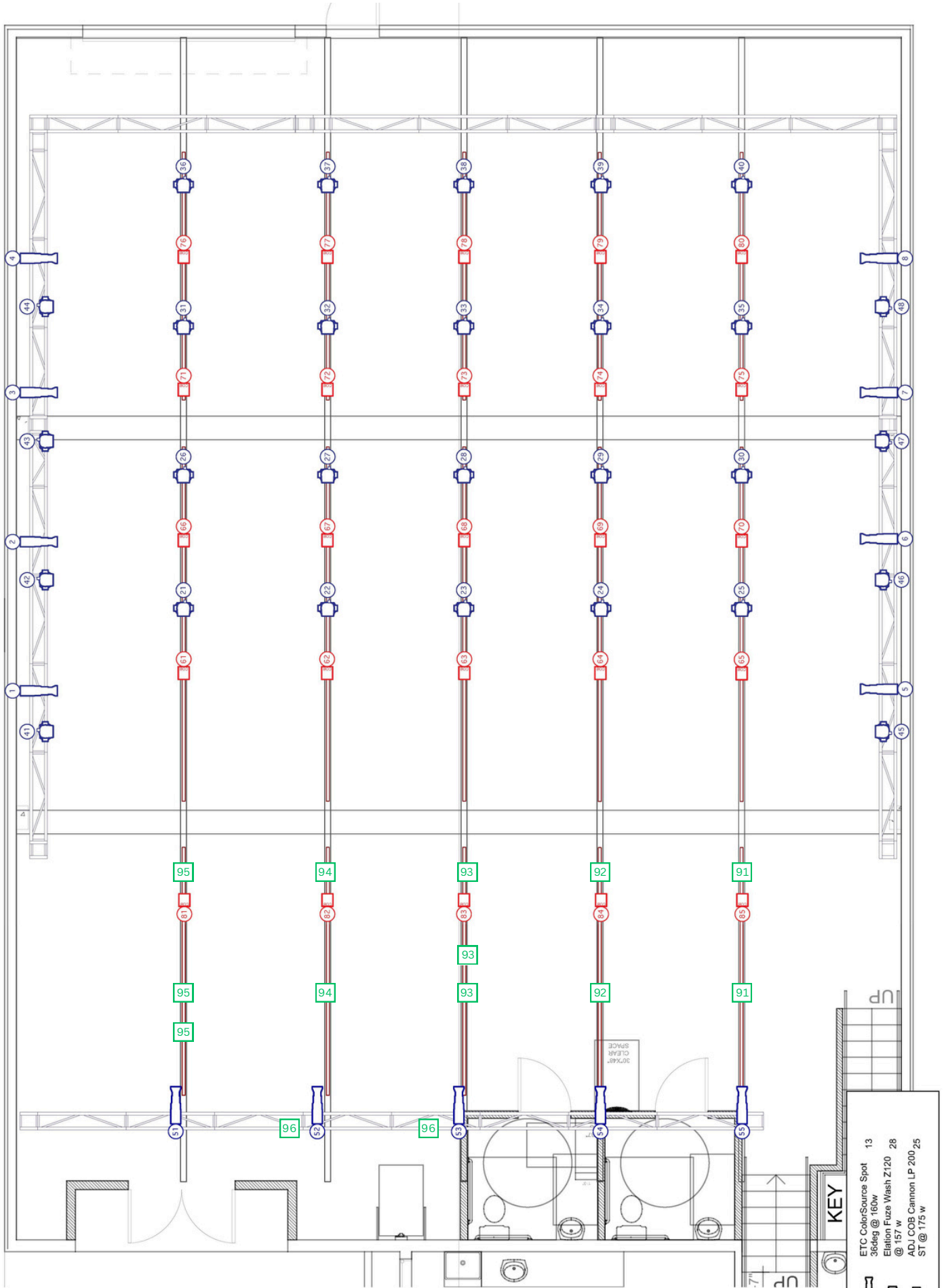
- Sprung floor with black Marley
- 2 Speaker Sound system w/ aux + BT
- Bistro lights
- Widescreen T.V. equipped with HDMI cord
- Floor Dimensions: 20' x 40'
- 2 restrooms
- A/C + Wifi
- ADA accessible



### PROPERTY EXTRAS

- Gated Parking for 13 + 1 ADA space
- A/C and fans
- High Speed Wi-fi + Ethernet connections
- Change room with shower
- Kitchenette with refrigerator, freezer, and microwave
- Meeting space / office
- Water bottle fillers
- Portable mirrors and ballet bars
- Security System





**KEY**

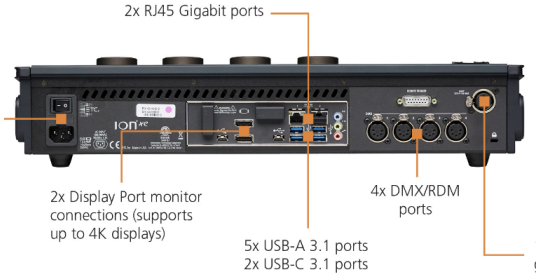
- ETC ColorSource Spot 13
- 36deg @ 160w
- Elation Fuze Wash Z120 28
- @ 157 w
- ADJ COB Cannon LP 200 25
- ST @ 175 w

**HOUSE LIGHTS**

HOUSE LIGHTS

# LIGHTING

## Lightboard: [Ion Xe](#)



## Instruments:

[Elation Fuze Wash Z120 Moving Head](#)  
(28 hung in plot)



[ETC ColorSource Spot 36-degree](#)  
(13 hung in plot / 2 on floor plates)



[ADJ COB Cannon LP200ST](#)  
(25 hung in plot)



## PROJECTION

---

Projector:

[Optoma HD28HDR Projector](#)



Projection Screen: (12.5' wide x 16' tall)



Available for use:

Macbook Air with Qlab for projection map to screen size.

*\*Large video files must be provided on a drive with USB connection.*

## SOUND

---

Mixer:

[Qu-16](#)



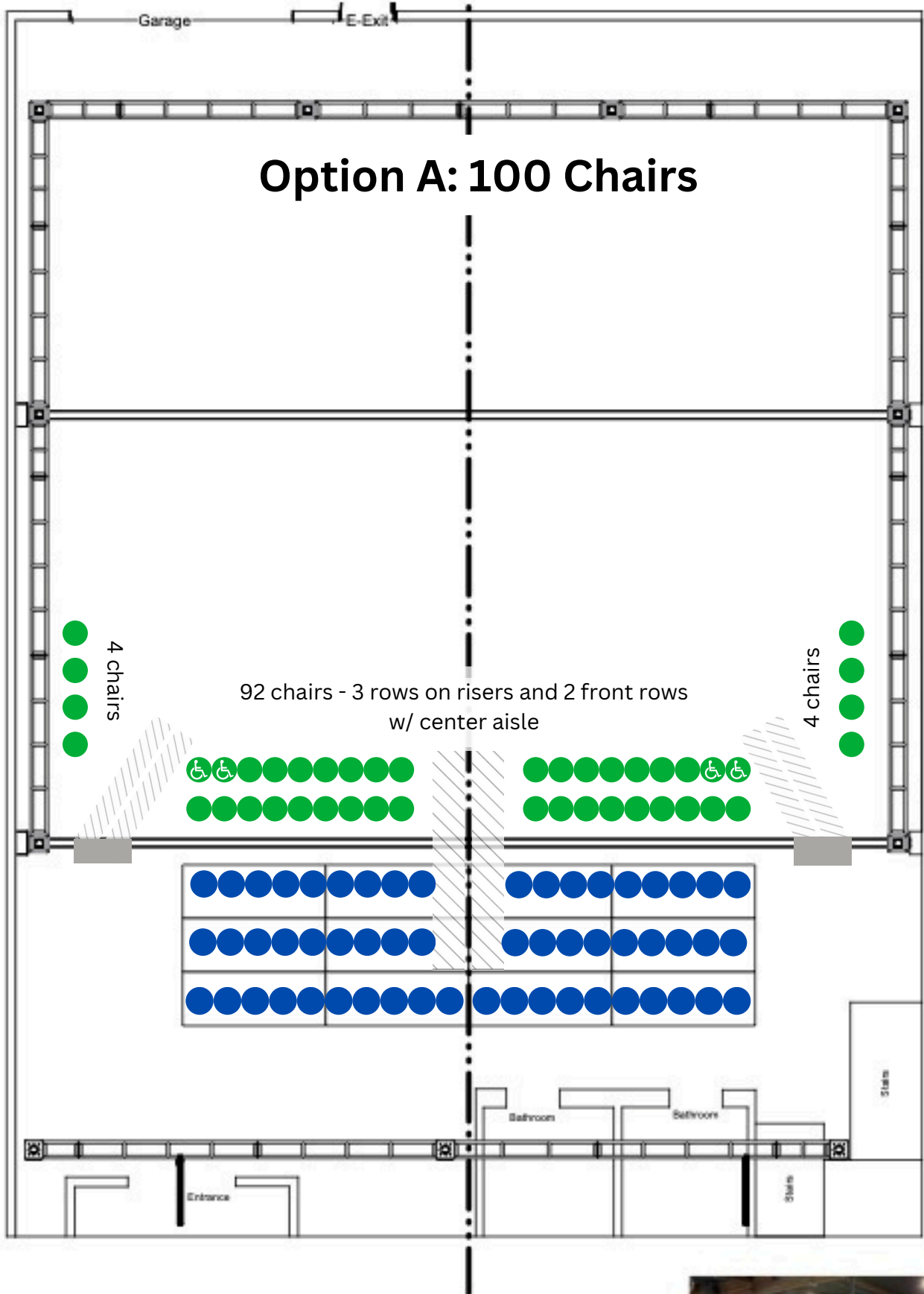
Additional equipment:

[AB168 AudioRack Expander](#)



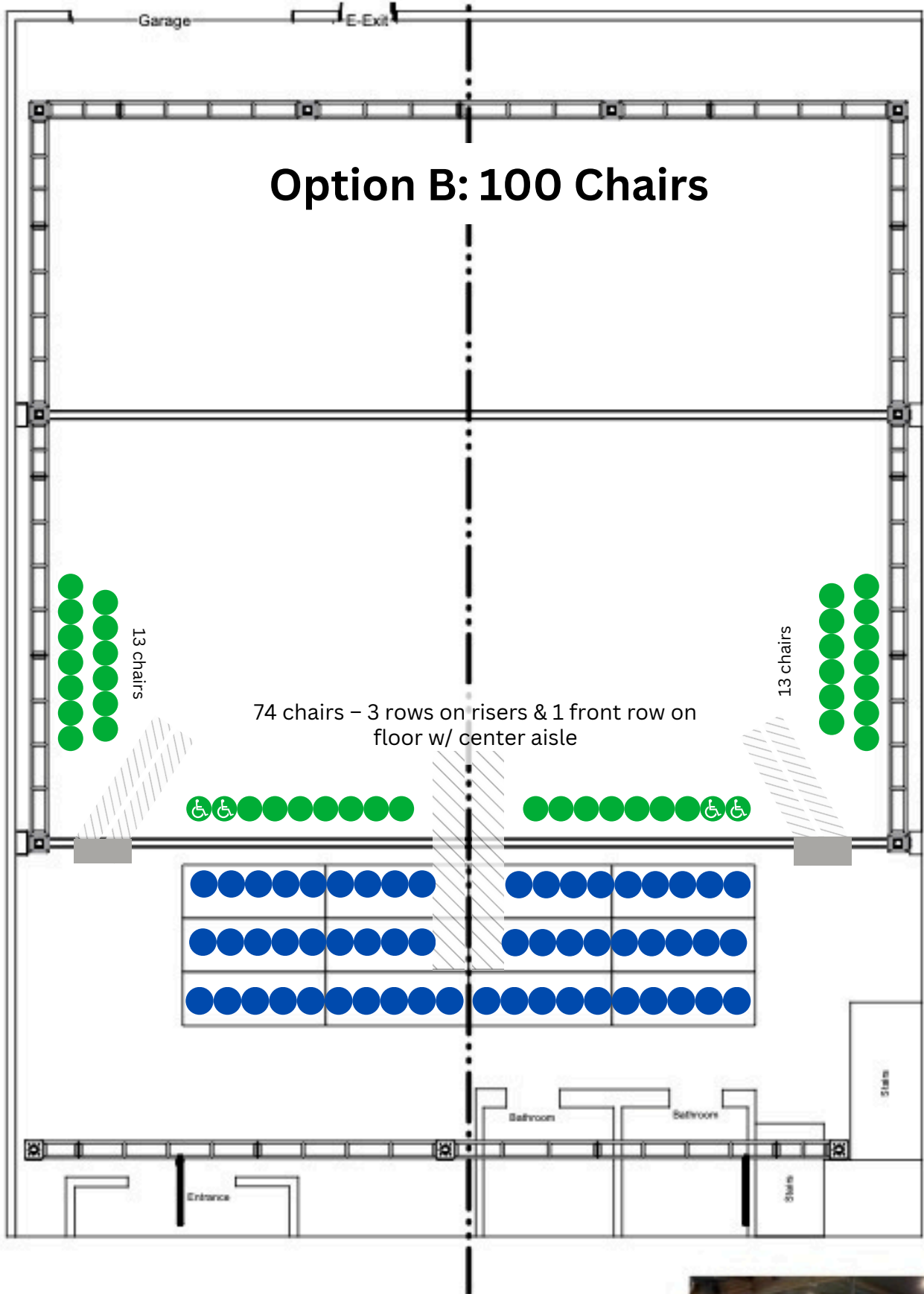
[Shure Wireless Dual Vocal System with two SM58 vocal mics](#)





# Stomping Ground Los Angeles

Scale : 1/8" = 1' - 0"



# Stomping Ground Los Angeles

Scale : 1/8" = 1' - 0"

