

STOMPING GROUND L.A. – SPEC SHEET

WAREHOUSE SPACE

- Sprung floor with black Marley
- Truss surrounding floor and batons overhead
- Theatrical lighting (see plot and inventory attached)
- Sound mixer and surround speakers
- Black curtain
- [Projector](#)
- Projection screen (12 ½' tall x 16' wide)
- Floor Dimensions: 40' x 48'; Ceiling height: 16'
- Widescreen T.V. equipped with HDMI cord
- 4 restrooms



GARAGE SPACE

- Sprung floor with black Marley
- Sound system
- Widescreen T.V. equipped with HDMI cord
- Floor Dimensions: 20' x 40'
- 2 restrooms



PROPERTY EXTRAS

- Gated Parking for 13 + 1 ADA space
- A/C and fans
- High Speed Wi-fi + Ethernet connections
- Change room with shower
- Kitchenette with refrigerator, freezer, and microwave
- Meeting space / office
- Water bottle fillers
- Portable mirrors and ballet bars
- Security System





litegeist, llc
 1607 N El Centro Ave #6
 Los Angeles, CA 90028
 310.896.5013

STOMPING GROUND LA LIGHTING INVENTORY

CONTROL

QTY	<i>ITEM</i>	<i>SPARE</i>
1	Ion XE Console w/ 24" Touchscreen	0
2	ETC Response 2-port nodes (located DSL & DSR)	0
1	Elation 8-port Opto splitter	0

FIXTURES

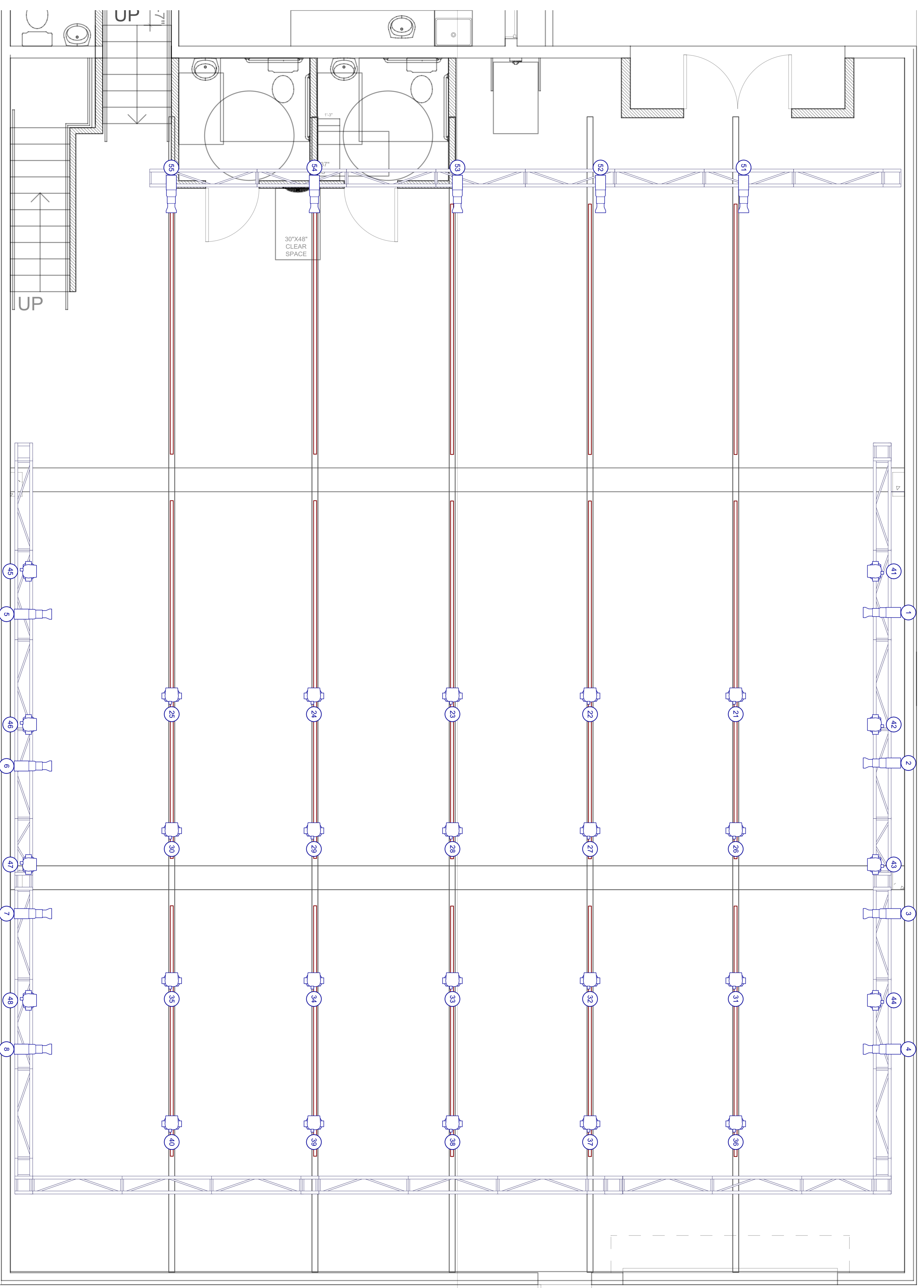
QTY	<i>ITEM</i>	<i>SPARE</i>
28	Elation Fuze Wash 120Z Moving Head	0
13	ETC ColorSource Spot 36-degree	2

CABLE

QTY	<i>ITEM</i>	<i>SPARE</i>
16	10' 5-pin DMX	11
12	15' 5-pin DMX	14
29	25' 5-pin DMX	4
8	50' 5-pin DMX	4
4	100' 5-pin DMX	0
12	10' PowerCon	12
15	15' PowerCon	0
18	25' PowerCon	14
8	10' Edison PBG	2
8	25' Edison PBG	1
8	50' Edison PBG	6

10/23/2020

	ETC ColorSource Spot 36deg @ 180w @ 157 w	13
	Elation Fuze Wash Z120 28	28



1607 N El Centro Ave #6
Los Angeles, CA 90028
(310) 894-5013
info@litegeist.net

All drawings, designs, specifications, and copies hereby furnished by litegeist, llc are sole and exclusive property of litegeist, llc. They are to be used only for the project specifically identified in this drawing. They shall not be reproduced or disclosed without written consent from litegeist, llc. litegeist, llc is only responsible for visual aspects of this project, and it is understood that all specifications relate solely to the appearance of the design and not to matters of safety.

FOR DESIGN INTENT ONLY

NOT FOR CONSTRUCTION

All drawings must be reviewed by a licensed electrical engineer. All equipment must be installed by a licensed electrician in accordance with all applicable local codes and the National Electric Code.

©2020 litegeist, llc

REVISIONS

Rev #	Date	Notes
A	3/10/20	Respaced wings

CLIENT: Stomping Ground LA
PROJECT:

STOMPING GROUND LA

DRAWING TITLE:
LIGHT PLOT (As Built)

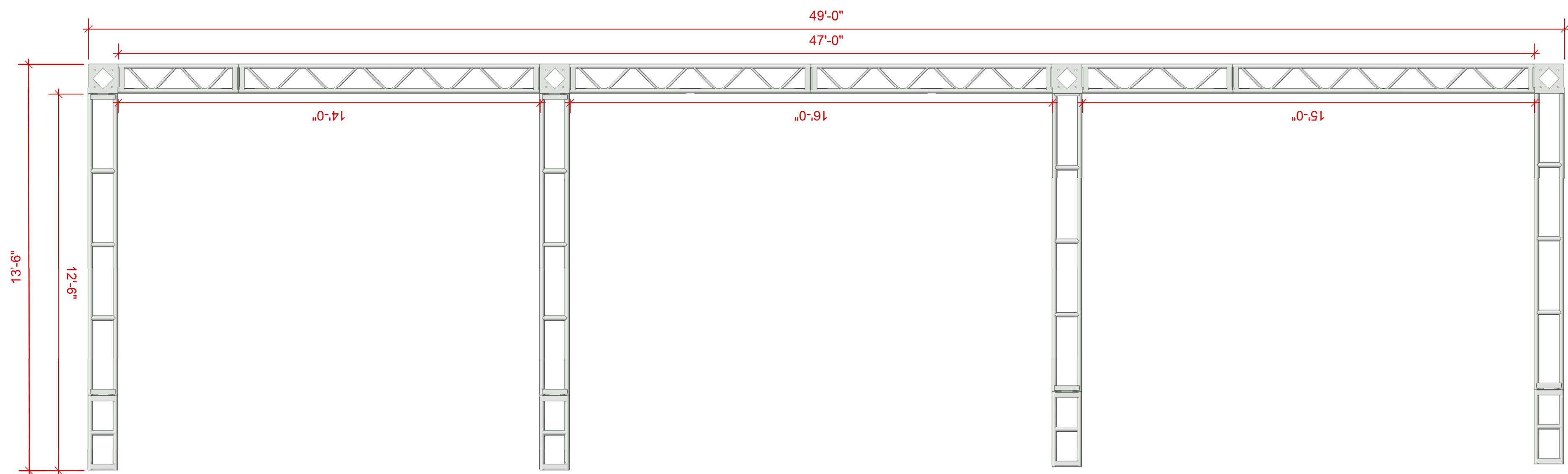
LOCATION:
5453 ALHAMBRA AV
LOS ANGELES, CA 90032

DESIGNER: RZ
SCALE: 3/16"=1'-0"
JOB NUMBER: LG 2031
DRAWN BY: RZ

DATE: 9/28/20
REVISED: RZ
FILE NAME: LG 2031 Stomping Ground LA Lighting Plot As Built.rvt

CHECKED BY: RZ
DATE: 9/28/20

PLATE NUMBER:
5
of 5



VERSION 1	STOMPING GROUNDS				
SCALE 3/8"=1'-0"	REAR TRUSS SIDE		STOMPING GROUNDS		
REVISION DATE	8/2/22	DRAWN BY	AJS	LOAD IN DATE	N/A

This paperwork, and all copies of it, are the property of Gravity Works LLC. It cannot be duplicated, modified or used for any purposes without permission from Gravity Works LLC. Use of this drawing for bidding purposes is strictly prohibited. The maximum loads represented in this document are theoretical guidelines that are meant to inform only experienced and qualified operators.